

HOME & LAND PACKAGE



\$344,463*

Always more with Metricon

More
Style

More
Value

More
Choice

More
Care

BAXTER 26
COASTAL



Waterford Rise
Warragul

4

BEDROOMS

2

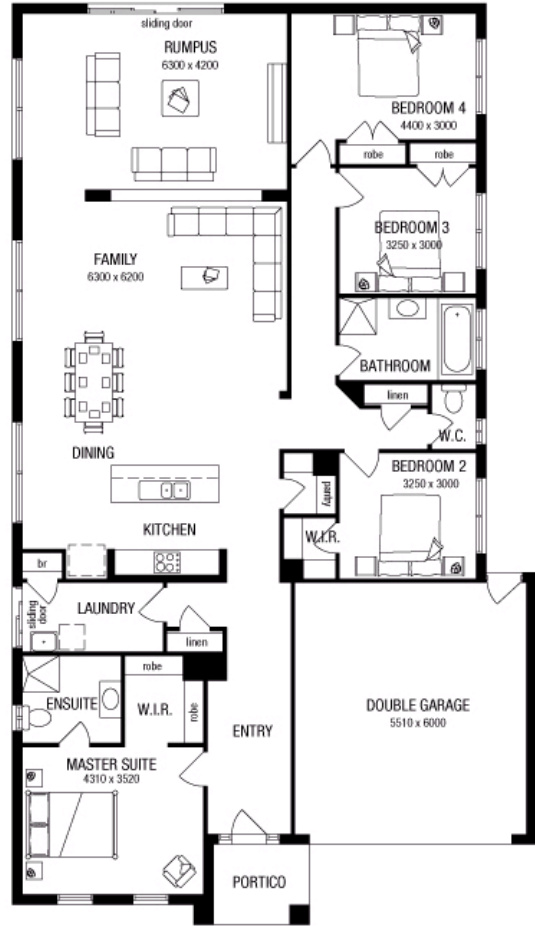
ENSUITES

2

CAR GARAGE

Pricing excludes Render to facade, Timber awning windows, External lighting, Timberlook sectional garage door, Fencing, Landscaping, Feature entry door, Eaves, Planterboxes, Tiled/ Stone facade feature, Brickwork above garage, Driveway.

Jacob Hague: 0412 904 084
Karen Villa: 0411 202 191



Traditional floorplan and standard specification shown. Floorplan may not reflect developer guidelines.

HOME & LAND PACKAGE INCLUSIONS

- BAL 12.5 requirements*
- Termite protection
- Floor tiles to entry, kitchen, family & dining (category 1)
- Carpet to all remaining areas (category 1)
- 900mm kitchen appliances
- Concrete driveway & path (35m²)
- Colorbond® steel roof
- Window locks throughout
- 20mm stone benchtop to Kitchen
- Remote controlled garage door
- Tiled shower base to ensuite
- Developer requirements
- 25 year structural guarantee#
- Typical Site cost allowance+
- 2550mm ceiling height (ground floor single storey homes)
- Gas ducted heating

BAXTER 26 Coastal
\$344,463*
 Lot 2511 Willandra Circuit
 Waterford Rise
 Block Size: 525m²

4

BEDROOMS

2

ENSUITES

2

CAR GARAGE



TYPICAL SITE COSTS[^]



TERMITE TREATMENT (EXCLUDING GEELONG)



COLORBOND® STEEL ROOF



25 YEAR STRUCTURAL GUARANTEE#

*Image includes upgrade items and may depict fixtures, finishes and features not supplied by Metricon such as landscaping and fencing. Accordingly, any prices in this flyer do not include the supply of those items. Floor plan is a representation of a Traditional façade unless otherwise stated. Metricon reserves the right to alter the images or descriptions without notice. Home & land package prices are correct at time of printing and subject to change without notice. Land prices and availability are subject to change without notice. Pricing does not include additional legal fees relating to the building and/or land contract and stamp duty charges. All home & land packages are subject to developer approval. # For details on our 25 year structural guarantee visit metricon.com.au/terms/structuralguarantee. See metricon.com.au for full details of standard inclusions and/or terms and conditions. *Price includes Bushfire Attack Level (BAL) of 12.5. Additional cost will incur if the BAL is over 12.5.+Typical site cost allowance included in the price. Additional site costs may apply if site survey and soil tests indicate the presence of fill or more than 300mm of land fall or presence of rock above the typical site allowance made. Excludes; stamp duty on land, legal fees, conveyance cost including titles and property reports. Package Printed Date: 21/07/2013 Price Region: Warragul.